

RB80XA.2-8-6A

Standard element

Installation

Anchored

H1

W1



Containment level

H1 (covers N1, T3, T2 and T1)

Working width

W1 (covers W2, W3, W4, W5, W6, W7 and W8)

Impact severity level

ASI B

**50%
LESS**
STEEL
USED



**20%
LESS**
CONCRETE
USED

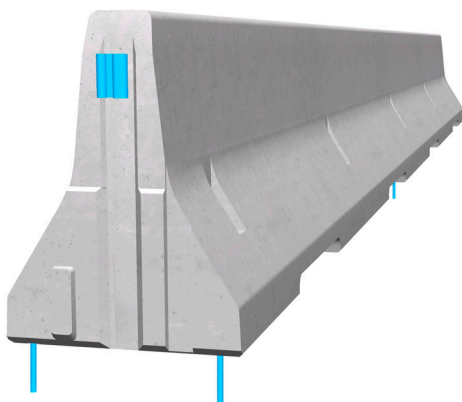


FURTHER
**33%
LESS**
CARBON
EMISSIONS




WITH
LOW
CARBON
CONCRETE

**COMPARING STANDARD RB80XA WITH LC RB80XA



Precast concrete vehicle restraint systems are used for long lasting protection in the central reservation or along the verge. Vehicles deviating from the road are retained and prevent a dangerous breakthrough. As a result road users and persons as well as objects at the roadside are well protected.

This RB80XA H1W1 Barrier has been designed and manufactured with reduced carbon emissions in mind.

 0115 983 2304

 sales@hardstaffbarriers.com | enquiries@hardstaffbarriers.com

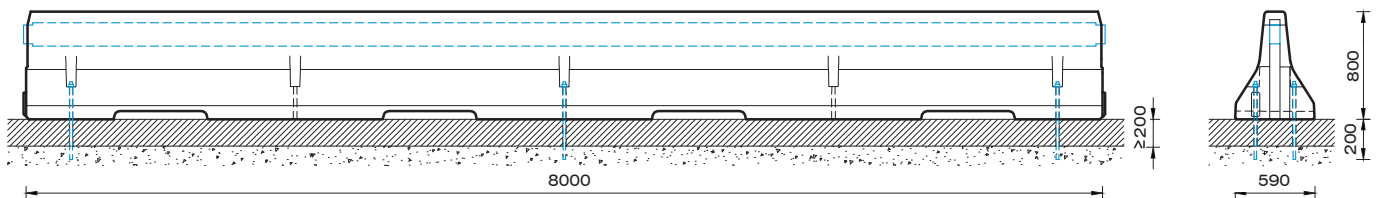
 A Division of Hill & Smith Ltd, Hillside, Gotham Road, Kingston-on-Soar, Nottingham, NG11 0DF

RB80XA.2_8_6A



Standard element

Technical data



all dimensions in mm

Containment level	H1
Working width	W1 ($W_N \leq 0.6m$)
Impact severity level	ASI B
Vehicle intrusion	VI2 ($VI_N \leq 0.8m$)
Installation	anchored in asphalt (per element 6 x adhesive anchors M16)
Terminal elements	not necessary, optional available
Dimensions L x W x H in mm	8000 x 590 x 800mm
Weight/element	approx 3850kg
Application	single-sided double-sided
Minimum installation length	32m (4 elements)
Curve radius	$r \geq 235m$, smaller radii on request
Coupling/exposed steel parts	fully integrated, exposed parts hot-dip galvanized
CE certification	✓