

REBLOC RB100-8

Standard element

Installation

Free standing

H2

W5



Containment level

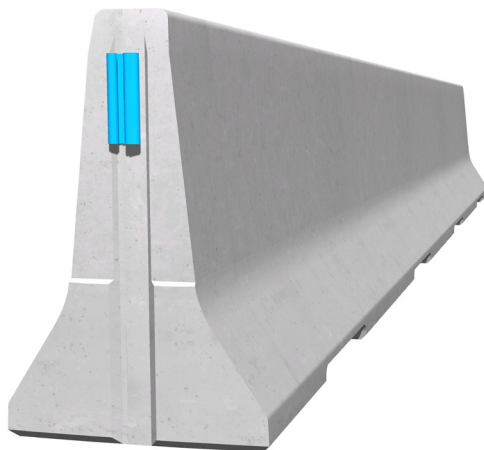
H2 (covers H1, N1, T3, T2 and T1)

Working width

W5 (covers W6, W7 and W8)

Impact severity level

ASI B



Precast concrete vehicle restraint systems are used for long lasting protection on the central reservation and along the verge. Vehicles deviating from the road are retained or redirected and prevent a dangerous breakthrough onto the opposite carriageway. As a result road users and persons as well as objects at the roadside are well protected.

The integrated, innovative coupling does not contain any loose parts. This does not only enhance the safety, but also the installation speed. The easy installation, which does not depend on weather conditions, reduces the disruptions of the traffic flow.

Thanks to the interlocking coupling, there are no loose parts, which prevent unauthorized removal of pieces and protects fully against vandalism.

 0115 983 2304

 sales@hardstaffbarriers.com

 A Division of Hill & Smith Ltd, Hillside, Gotham Road, Kingston-on-Soar, Nottingham, NG11 0DF

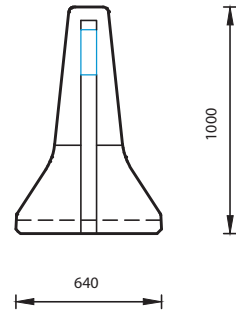
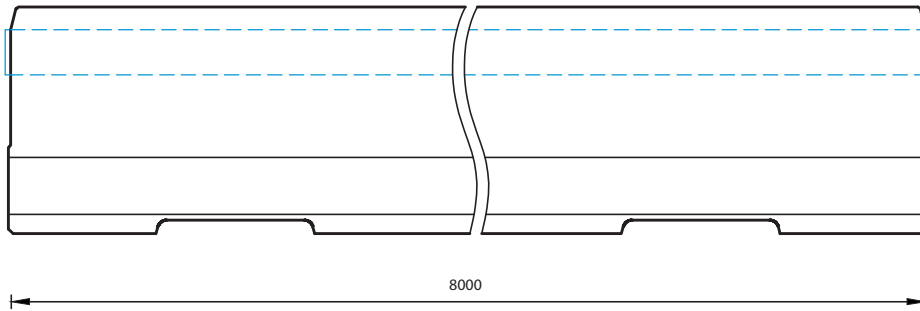
REBLOC RB100-8

Standard element

H2

W5

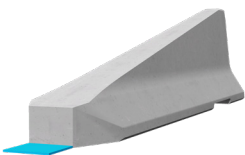
Technical data



all dimensions in mm

Containment level	H2
Working width	W5
Impact severity level	ASI B
Vehicle intrusion	VI5
Installation	free standing
Terminal elements	required; REBLOC 100-4T (4 x M24 adhesive anchor)
Dimensions L x W x H in mm	8000 x 640 x 1000 mm
Weight/element (approx.)	6000 kg
Elements/truck (24 t)	4 elements
Minimum installation length	104 m
Curve radius	$r \geq 108$ m, smaller radii in combination with REBLOC 100-4, R -3 and REBLOC 100-2
Coupling/exposed steel parts	fully integrated, exposed parts hot-dip galvanized
CE certification	✓

System element - combinable



Terminal element
REBLOC 100-4T
(inclination 1:5)