

REBLOC RB100SFS-8

Standard element

Installation

Free standing

H2

W4



Containment level

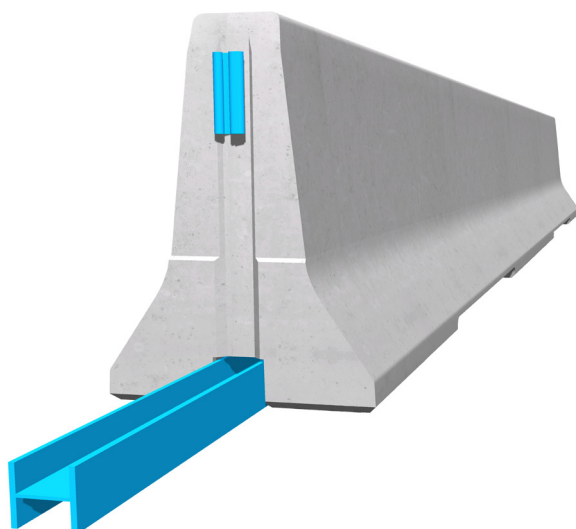
H2 (covers H1, N1, T3, T2 and T1)

Working width

W4 (covers W5, W6, W7 and W8)

Impact severity level

ASI B



Precast concrete vehicle restraint systems are used for long lasting protection on the central reservation and along the verge. Vehicles deviating from the road are retained or redirected and prevent a dangerous breakthrough onto the opposite carriageway. As a result road users and persons as well as objects at the roadside are well protected.

The integrated, innovative coupling does not contain any loose parts. This does not only enhance the safety, but also the installation speed. The easy installation, which does not depend on weather conditions, reduces the disruptions of the traffic flow.

Thanks to the interlocking construction, there are no loose parts, which prevent unauthorized removal of pieces and protects fully against vandalism.

 0115 983 2304

 sales@hardstaffbarriers.com | enquiries@hardstaffbarriers.com

 A Division of Hill & Smith Ltd, Hillside, Gotham Road, Kingston-on-Soar, Nottingham, NG11 0DF

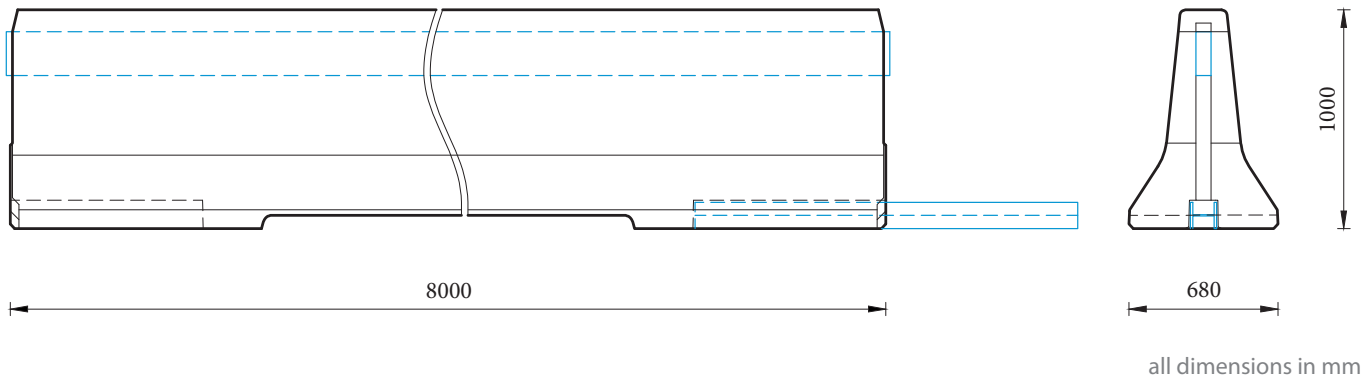
REBLOC RB100SFS-8

Standard element

H2

W4

Technical data

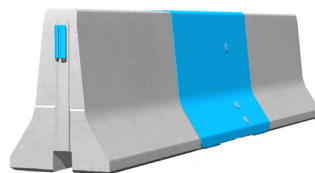


Containment level	H2
Working width	W4
Impact severity level	ASI B
Vehicle intrusion	VI8
Installation	free standing on asphalt/concrete
Terminal elements	required; REBLOC 100SFS-4T (4 x M24 adhesive anchors)
Dimensions L x W x H in mm	8000 x 680 x 1000 mm
Weight/element (approx.)	6,500 kg
Elements/truck (24 t)	3 elements
Minimum installation length	96 m (not including terminal elements)
Curve radius	$r \geq 350$ m, smaller radii on request
Coupling/exposed steel parts	fully integrated, exposed parts hot-dip galvanized
CE certification	✓

System elements - combinable



Terminal element
REBLOC 100SFS-4TR/L



Dilatation element
REBLOC 100SFS-2.35EXM