

# REBLOC RB100SFS-8

Standard element

Installation

Free standing

H4b

W5



Containment level

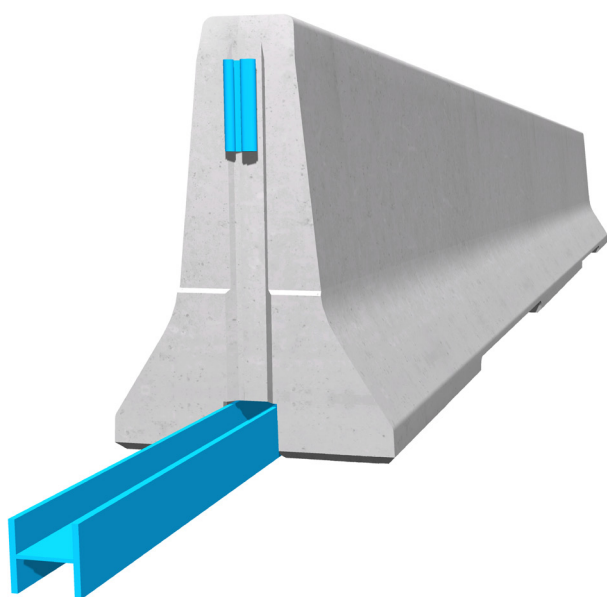
**H4b** (covers H3, H2, H1, N1, T3, T2 and T1)

Working width

**W5** (covers W6, W7 and W8)

Impact severity level

**ASI B**



Precast concrete vehicle restraint systems are used for long lasting protection on the central reservation and along the verge. Vehicles deviating from the road are retained or redirected and prevent a dangerous breakthrough onto the opposite carriageway. The integrated, innovative coupling does not contain any loose parts. This does not only enhance the safety, but also the installation speed. The easy installation, which does not depend on weather conditions, reduces the disruptions of the traffic flow.

Thanks to the interlocking construction, there are no loose parts, which prevent unauthorized removal of pieces and protects fully against vandalism.

0115 983 2304

sales@hardstaffbarriers.com | enquiries@hardstaffbarriers.com

A Division of Hill & Smith Ltd, Hillside, Gotham Road, Kingston-on-Soar, Nottingham, NG11 0DF

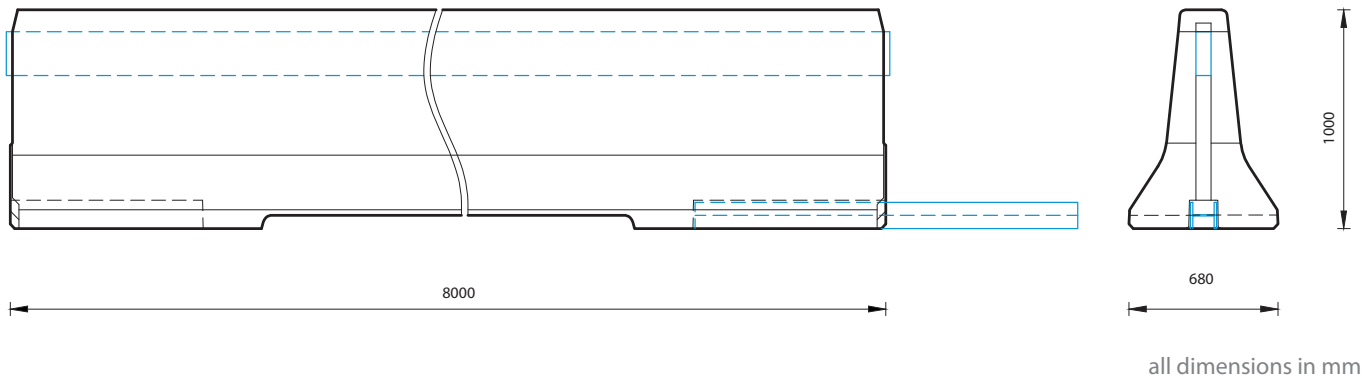
# REBLOC RB100SFS-8

Standard element

H4b

W5

## Technical data

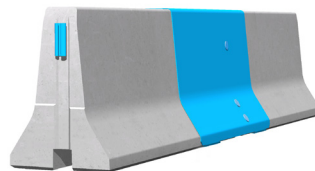


|                              |   |
|------------------------------|---|
| Containment level            | H4b   |
| Working width                | W5  |
| Impact severity level        | ASI B   |
| Vehicle intrusion            | VI8   |
| Installation                 | free standing on asphalt/concrete                     |
| Terminal elements            | required; REBLOC 100SFS-4T (4 x M24 adhesive anchors) |
| Dimensions L x W x H in mm   | 8000 x 680 x 1000 mm                                  |
| Weight/element (approx.)     | 6500 kg   |
| Elements/truck (24 t)        | 3 elements  |
| Minimum installation length  | 96 m  |
| Curve radius                 | r ≥ 350 m, smaller radii on request                   |
| Coupling/exposed steel parts | fully integrated, exposed parts hot-dip galvanized    |
| CE-certification             | ✓   |

## System element - combinable



Terminal element  
REBLOC 100SFS-4TR/L



Dilatation element  
REBLOC 100SFS\_2.35EXM