

REBLOC RB100SF-8

Standard element

Installation

Free standing

H4b

W5



Containment level

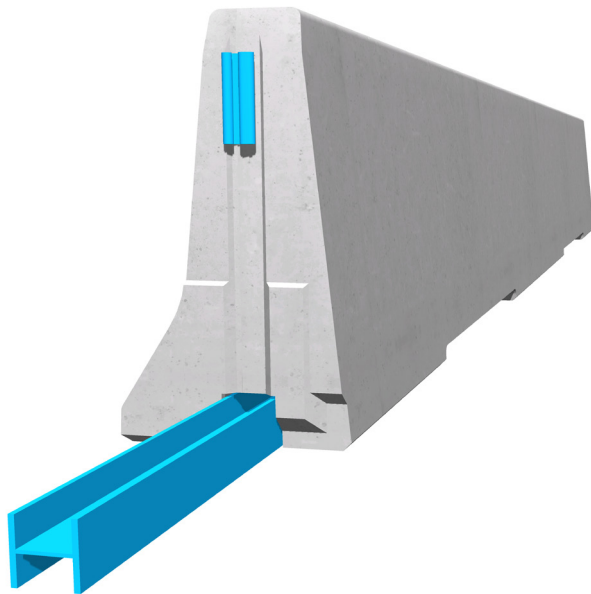
H4b (covers H3, H2, H1, N1, T3, T2 and T1)

Working width

W5 (covers W6, W7 and W8)

Impact severity level

ASI B



Precast concrete vehicle restraint systems are used for long lasting protection on the central reservation and along the verge. Vehicles deviating from the road are retained or redirected and prevent a dangerous breakthrough onto the opposite carriageway.

The integrated, innovative coupling does not contain any loose parts. This does not only enhance the safety, but also the installation speed. The easy installation, which does not depend on weather conditions, reduces the disruptions of the traffic flow.

Thanks to the interlocking construction, there are no loose parts, which prevent unauthorized removal of pieces and protects fully against vandalism.

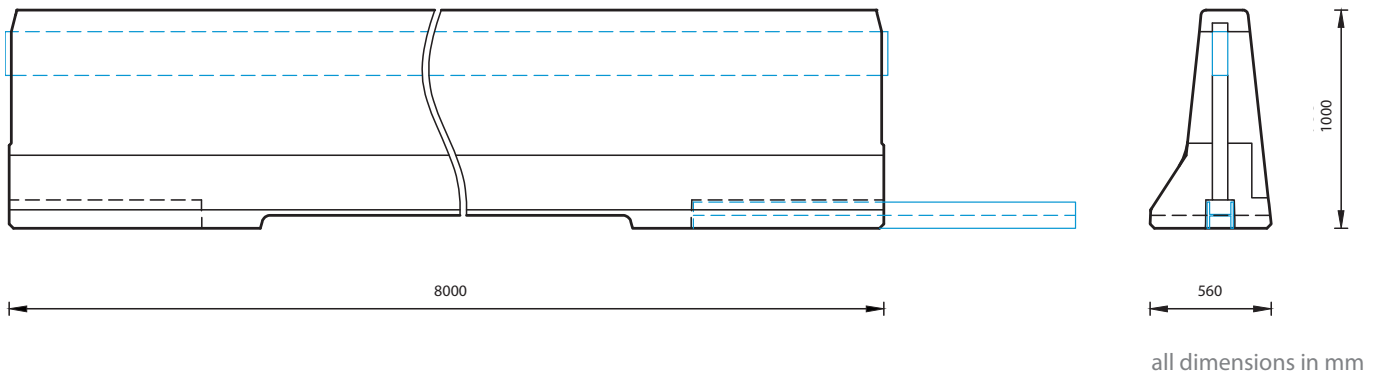
REBLOC RB100SF-8

Standard element

H4b

W5

Technical data

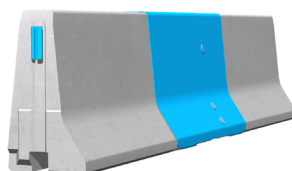


Containment level	H4b
Working width	W5
Impact severity level	ASI B
Vehicle intrusion	VI8
Installation	free standing on asphalt/concrete
Terminal elements	required; REBLOC 100SF_4TR/L (4 x M24 adhesive anchors)
Dimensions L x W x H in mm	8000 x 560 x 1000 mm
Weight/element (approx.)	6080 kg
Elements/truck (24 t)	4 elements
Minimum installation length	96 m
Curve radius	$r \geq 350$ m, smaller radii on request
Coupling/exposed steel parts	fully integrated, exposed parts hot-dip galvanized
CE-certification	✓

System element - combinable



Terminal element
REBLOC 100SF_4TR/L



Dilatation element
REBLOC 100SF_2.35EXM