

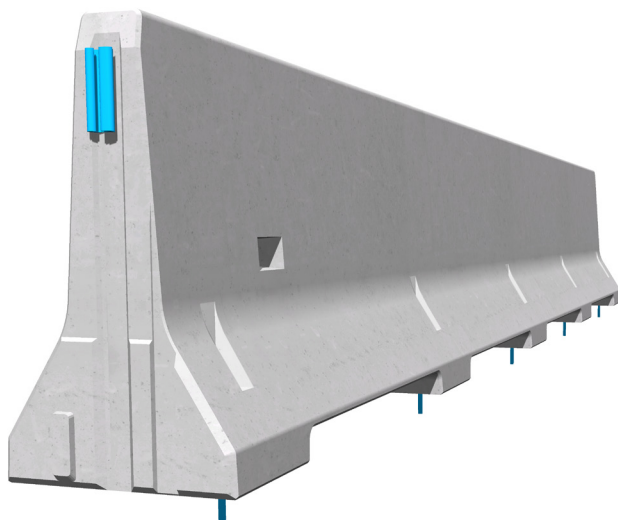
REBLOC RB120A-7.5

Standard element

Installation
Anchored



Containment level **H4b** (covers H3, H2, H1, N1, T3, T2 and T1)
 Working width **W2** (covers W3, W4, W5, W6, W7 and W8)
 Impact severity level **ASI B**



The anchored system with minimal working width is ideal for the application on the edge of bridges, for the protection of bridge piers as well as along the verge of roads.

The integrated, innovative coupling does not contain any loose parts. This does not only enhance the safety, but also the installation speed. The easy installation, which does not depend on weather conditions, reduces the disruptions of the traffic flow.

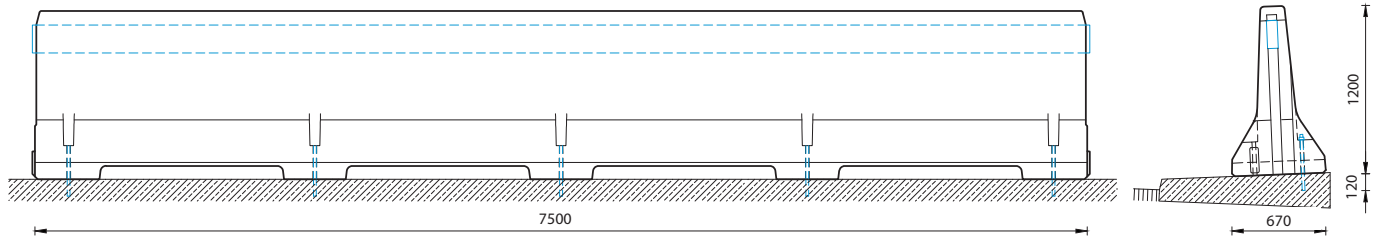
A system related dilatation for bridge expansion joints was installed in the first third of the installation length. This evens out natural movements of the construction due to temperature fluctuations and transmits longitudinal forces.

REBLOC RB120A-7.5

Standard element



Technical data



all dimensions in mm

Containment level	H4b
Working width	W2
Impact severity level	ASI B
Vehicle intrusion	VI6
Installation	anchored on bridge cap (concrete) (5 x adhesive anchors M20 in concrete per element)
Terminal elements	not necessary, optional available
Dimensions L x W x H in mm	7500 x 670 x 1200 mm
Weight/element (approx.)	6000 kg
Elements/truck (24 t)	4 elements
Minimum installation length	75 m
Curve radius	$r \geq 250$ m, smaller radii on request
Coupling/exposed steel parts	fully integrated, exposed parts hot-dip galvanized
CE certification	✓

System elements - combinable

Dilatation	Length compensation
REBLOC dilatation coupling RC200_D753	+/- 100 mm, larger elongation on request