

REBLOC RB140SFS_5.5

Standard element

H4a

W4

Installation

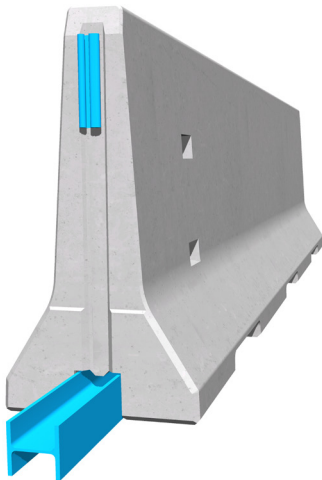
Free Standing



| | |
|-----------------------|-------------------------------------------------------|
| Containment level | H4a (covers H3, H2, H1, N1, T3, T2 and and T1) |
| Working width | W4a (covers W5, W6, W7 and W8) |
| Impact severity level | ASI B |

Product features & Advantages

- Installed on an asphalt depth of just 200 mm, the REBLOC system requires a low ground bearing pressure of only 0.2 MPa
- High installation speed in any weather conditions
- Effective glare protection due to system height of 1400 mm



Precast concrete vehicle restraint systems are used for long lasting protection on the central reservation and along the verge. Vehicles deviating from the road are retained or redirected and prevent a dangerous breakthrough onto the opposite carriageway.

The integrated, innovative coupling does not contain any loose parts. This does not only enhance the safety, but also the installation speed. The easy installation, which does not depend on weather conditions, reduces the disruptions of the traffic flow.

Thanks to the interlocking coupling, there are no loose parts, which prevents unauthorized removal of pieces and protects fully against vandalism.

¹⁾ according to simulation report

0115 983 2304

sales@hardstaffbarriers.com | enquiries@hardstaffbarriers.com

A Division of Hill & Smith Ltd, Hillside, Gotham Road, Kingston-on-Soar, Nottingham, NG11 0DF

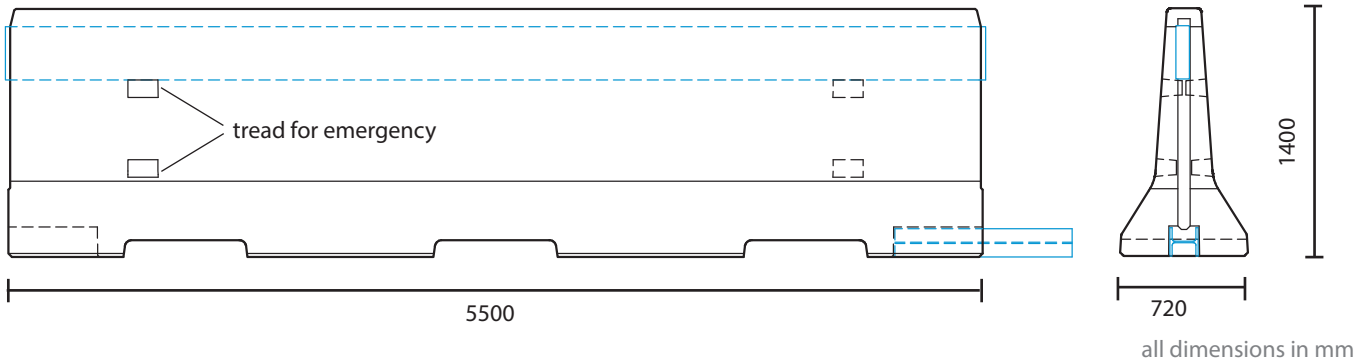
REBLOC RB140SFS-5.5

Standard element

H4a

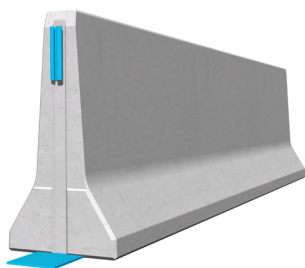
W4

Technical data

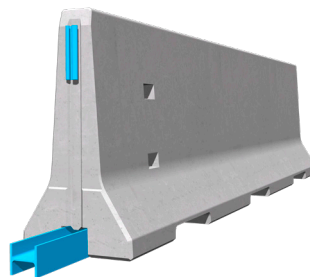


| | |
|------------------------------|-----------------------------------------------------|
| Containment level | H4a |
| Working width | W4 |
| Impact severity level | ASI B |
| Installation | free standing on asphalt/concrete |
| Terminal elements | required; REBLOC 140SFS-6T (4 x screwbolts Ø 20 mm) |
| Dimensions L x W x H in mm | 5500 x 720 x 1400 mm |
| Weight/element (approx.) | 6000 kg |
| Elements/truck (24 t) | 4 elements |
| Minimum installation length | 88 m (not including terminal elements) |
| Curve radius | $r \geq 197$ m, smaller radii on request |
| Coupling/exposed steel parts | fully integrated, exposed parts hot-dip galvanized |
| CE certification | ✓ |

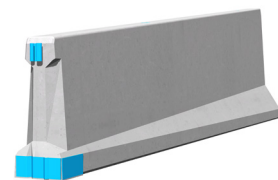
System element - combinable



Transition/terminal element
REBLOC 140SFS-5.5TS



Standard element
REBLOC 140SFS-5.5_H4a/W4



Transition element
REBLOC 80S-140SFS-5.5

¹⁾ according to simulation report

0115 983 2304

sales@hardstaffbarriers.com | enquiries@hardstaffbarriers.com

A Division of Hill & Smith Ltd, Hillside, Gotham Road,
Kingston-on-Soar, Nottingham, NG11 0DF