

REBLOC RB80XA_8_6A

Standard element

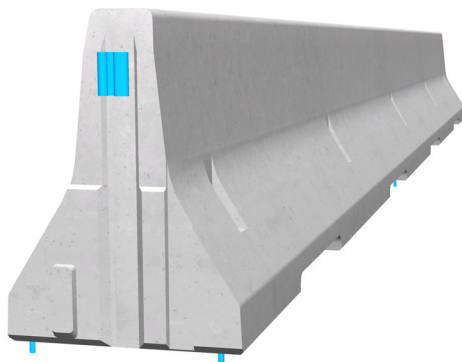
H2

W2

Installation
Anchored



Containment level **H2** (covers H1, N1, T3, T2 and T1)
Working width **W2** (covers W3, W4, W5, W6, W7 and W8)
Impact severity level **ASI B**



The anchored system with minimum working width is ideal for the application in the central reservation of bridges and for the protection of bridge piers.

The reliable restraint function is achieved by the tension bar in combination with six anchors per element. The integrated coupling system connects the individual elements to form a continuous and strong chain, which safely dissipates the energy caused by vehicle impact.

A system related dilatation for bridge expansion joints was installed in the first third of the installation length. This evens out natural movements of the construction due to temperature fluctuations and transmits longitudinal forces.

The system is also available as single-sided effective REBLOC 80XA_8_3A with 3 anchorages on the verge of the road.

0115 983 2304

sales@hardstaffbarriers.com | enquiries@hardstaffbarriers.com

A Division of Hill & Smith Ltd, Hillside, Gotham Road,
Kingston-on-Soar, Nottingham, NG11 0DF

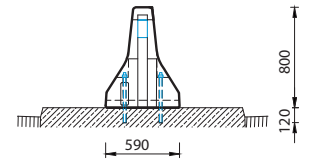
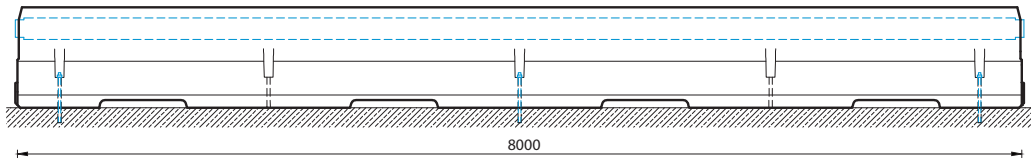
REBLOC RB80XA-8-6A

Standard element

H2

W2

Technical data



all dimensions in mm

Containment level	H2
Working width	W2
Impact severity level	ASI B
Vehicle intrusion	VI2
Installation	anchored (6 x M16 adhesive anchors in concrete per element)
Terminal elements	not necessary, optional available
Dimensions L x W x H in mm	8000 x 590 x 800
Weight/element (approx.)	4600 kg
Elements/truck (24 t)	5 elements
Minimum installation length	56 m
Curve radius	$r \geq 250$ m, smaller radii on request
Coupling/exposed steel parts	fully integrated, exposed parts hot-dip galvanized
CE certification	✓