

# REBLOC RB80XW\_8

Standard element

Installation

Free standing  
in front of rigid wall

H2

W1



Containment level

H2 (covers H1, N1, T3, T2, T1)

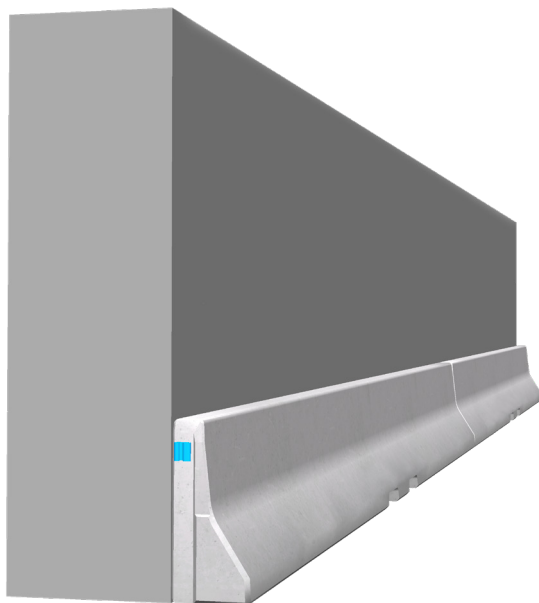
Working width

W1 in combination with rigid wall

(covers W2, W3, W4, W5, W6, W7, W8)

Impact severity level

ASI B



The free standing system REBLOC 80XW\_8 has been designed for the application along vertical (tunnel) walls. Thanks to its asymmetric shape, it can be positioned seamlessly along already existing tunnel walls. Due to the low system width valuable space keeps remaining and a sufficient width of the traffic lanes is ensured.

Through the positioning of the concrete barriers along the tunnel wall, the impact severity of deviating vehicles is reduced. Thereby the safety of vehicle passengers is ensured according to EN 1317 with ASI B.

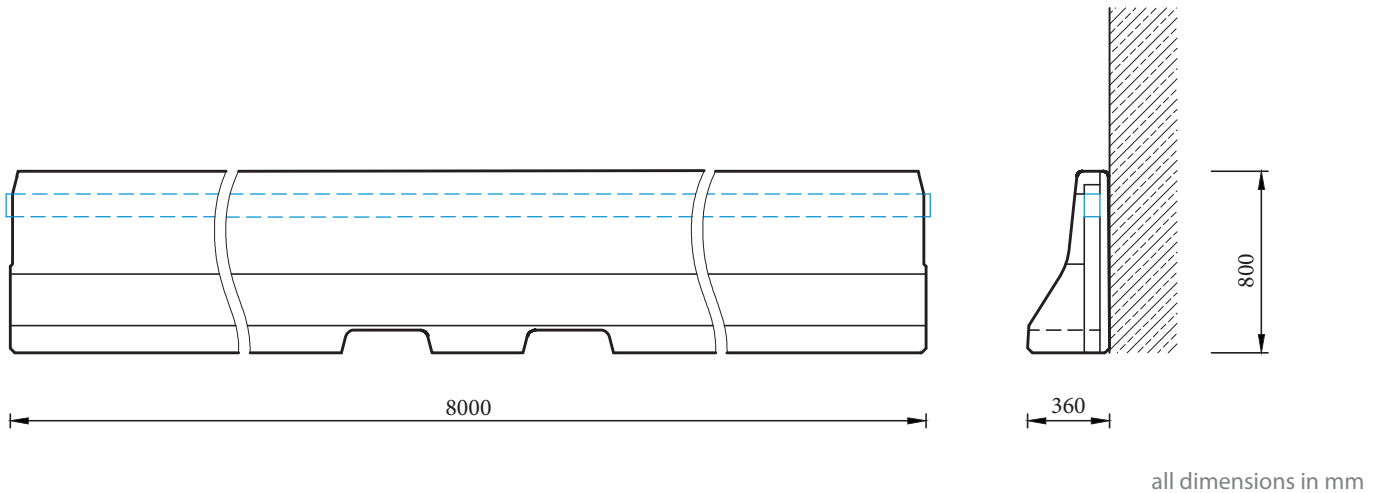
The elements are connected by the patented REBLOC® coupling to form a strong chain. The high installation speed shortens the construction site duration and the traffic restricting measures for the on-coming traffic are reduced to a minimum. To allow an efficient installation every element has special openings for a forklift. So the elements can be positioned completely seamless to the back wall.

# REBLOC RB80XW-8

Standard element



## Technical data



Containment level	H2
Working width	W1 in combination with rigid wall
Impact severity level	ASI B
Vehicle intrusion	VI1 (In combination with rigid wall)
Installation	free standing in front of rigid wall
Terminal elements	not necessary, optional available
Dimensions L x W x H in mm	8000 x 360 x 800 mm
Weight/element (approx.)	3300 kg
Elements/truck (24 t)	7 elements
Minimum installation length	32 m (not including terminal elements)
Curve radius	r ≥ 50 m (the road side facing away), r ≥ 235 m (the road side facing), smaller radii on request
Coupling/exposed steel parts	fully integrated, exposed parts hot-dip galvanized
CE certification	✓