

REBLOC RB80X-8

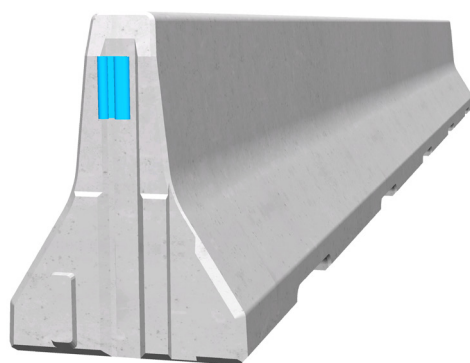
Standard element

Installation

Free standing



Containment level **H2** (covers H1, N1, T3, T2 and T1)
 Working width **W4** (covers W5, W6, W7 and W8)
 Impact severity level **ASI B**



Precast concrete vehicle restraint systems are used for long lasting protection on the central reservation and along the verge. Vehicles deviating from the road are retained or redirected and prevent a dangerous breakthrough onto the opposite carriageway. As a result road users and persons as well as objects at the roadside are well protected.

The integrated, innovative coupling together with a full-length steel tension bar and an ingeniously-designed reinforcement system ensure high security and practicality. The single elements are connected to a strong chain, which safely dissipates the energy caused by vehicle impact.

Thanks to the interlocking coupling, there are no loose parts, which prevent unauthorized removal of pieces and protects fully against vandalism.

 0115 983 2304

 sales@hardstaffbarriers.com | enquiries@hardstaffbarriers.com

 A Division of Hill & Smith Ltd, Hillside, Gotham Road, Kingston-on-Soar, Nottingham, NG11 0DF

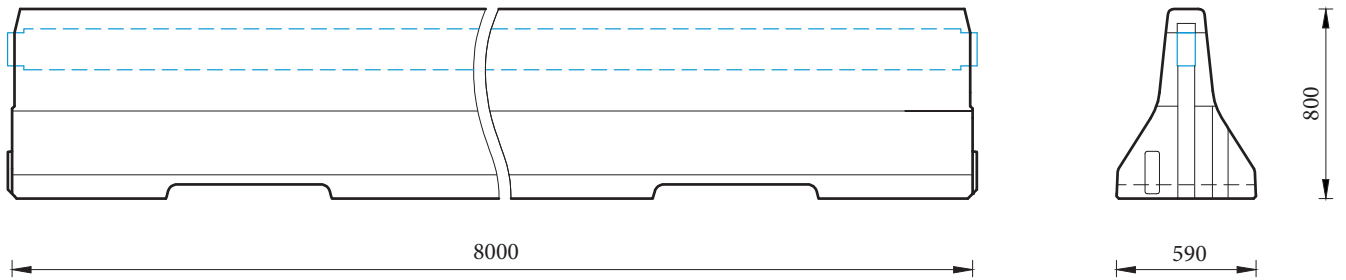
REBLOC RB80X-8

Standard element

H2

W4

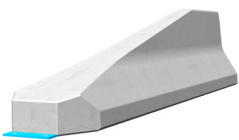
Technical data



all dimensions in mm

Containment level	H2
Working width	W4
Impact severity level	ASI B
Vehicle intrusion	VI3
Installation	free standing on asphalt/concrete
Terminal elements	required; REBLOC 80X-4T (2 x screwbolts \varnothing 20 mm)
Dimensions L x W x H in mm	8000 x 590 x 800 mm
Weight/element (approx.)	4700 kg
Elements/truck (24 t)	5 elements
Minimum installation length	80 m (not including terminal elements)
Curve radius	$r \geq 250$ m, smaller radii on request
Coupling/exposed steel parts	fully integrated, exposed parts hot-dip galvanized
CE certification	✓

System elements - combinable



Terminal element
REBLOC 80X-4T
(inclination 1:5)